



# LDAK News

*Not all great minds think alike!*

Learning Disabilities Association of Kansas • P.O. Box 4424 • Topeka, Kansas 66604 • [www.ldakansas.org](http://www.ldakansas.org) • Spring 2008

## MESSAGE FROM THE PRESIDENT



### PLAN AHEAD!!

#### LDAK Annual Conference November 6-7, 2008!

The 38th Annual Statewide Conference of the Learning Disabilities Association of Kansas is set, and the final arrangements are being made. This year's conference will be held at Johnson County Community College

(JCCC) in Overland Park, Kansas. Last year's conference was a big success and, based on participant feedback to the LDAK Board, we are anticipating an even greater attendance at the 2008 conference. To accommodate the increasing interest and expand available facilities, we have chosen the JCCC campus for our 2008 location. Mark your calendars and begin planning to join us for the event. As the date draws closer, additional information will be posted on the LDA Kansas website at [www.ldakansas.org](http://www.ldakansas.org).

Plan to join us on November 6, 7-8:30 p.m., for a free "kick-off" session that will focus on parent issues and interests. On Friday, November 7, 8 a.m. – 4 p.m., the conference will provide a full day of special breakout sessions, including our Keynote Address by Dr. Samuel O. Ortiz. Dr. Ortiz is nationally known for his efforts in addressing issues of cultural and linguistic diversity among students with special needs.

### Award Opportunities!!

Take time to nominate a parent, student, educator or professional whose efforts reflect the importance and success of individuals with special needs. To access the Award Nomination form, go to the [www.ldakansas.org](http://www.ldakansas.org)

website and click on the "Awards" link. The LDAK Awards recognize "Outstanding Special Education Teacher," "Outstanding Professional," "Outstanding Student" and "Swalwell Award for Parent of the Year." Also, consider nominating a Kansas student with learning disabilities for the Deaun Jeter Memorial Scholarship. The purpose of the scholarship is to aid Kansas students with learning disabilities in their endeavors to pursue higher education. The nomination form for this award can be found under the "Scholarship" link. You may also complete the Awards Nomination form found in this newsletter and mail it to Sharyl Kennedy at the address on the form. All of these awards will be presented at our conference in November.

### Hot Topics!!

Don't forget to check out the National LDA website at [www.lidaamerica.org](http://www.lidaamerica.org) for updates on current issues. You will find links to current topics such as Response to Intervention (RtI), including the "LDA of America Position Paper on Response to Intervention" ([www.lidaamerica.org/about/position/rti.asp](http://www.lidaamerica.org/about/position/rti.asp)) and "Responsiveness to Intervention: Questions PARENTS Must Ask" ([www.lidaamerica.org/news/responsiveness.asp](http://www.lidaamerica.org/news/responsiveness.asp)), as well as many more topics of interest to parents and professionals in the field of education. You may have heard references to the Kansas Multi-Tiered System of Support. The Kansas State Department of Education provides information on the Kansas model for implementing a multi-tiered response to intervention in the areas of academics and behavior at [www.kscommunitiesofpractice.org/Resources.htm](http://www.kscommunitiesofpractice.org/Resources.htm).

### "Not All Great Minds Think Alike"

Please review the special information within this newsletter and plan now to join us on **November 6-7, 2008**, as we continue to seek to provide opportunities that will help us better serve all students.

Dr. Diane L. Miller  
LDAK President

# EXECUTIVE BOARD MEMBERS

**Diane Miller, Ed.D., Lawrence** . . . . . **President**  
dlbmiller@sbcglobal.net

**Cindy Swarner, M.S.Ed.** . . . . . **Vice President**  
cswarner@kumc.edu

**Andrew Shoemaker, Lawrence** . . . . **2nd Vice President**  
shoe@ku.edu

**Doug McFarland, Overland Park** . . . . . **Immediate Past President**  
mcfarlands2000@yahoo.com

**Andrea Blair, Manhattan** . . . . . **Secretary**  
andreab@ksu.edu

**Marcia Williams, Topeka** . . . . . **General Contact and Executive Secretary**  
marciasu@aol.com

**Kent Williams** . . . . . **Treasurer**  
Kent.Williams@hds.com

**Holly Dressler, Overland Park** . . . . . **Newsletter Editor**  
dressler@jccc.edu

**Vacant** . . . . . **Young Adult Advocate**

## Professional Advisory Board

**Avner Stern, Ph.D.** . . . . . **Behavioral Health Specialists**  
Overland Park, KS

**Julia ShafteI, Ph.D.** . . . . . **University of Kansas**  
Lawrence, KS

**Gloria Dye, Ph.D.** . . . . . **Washburn University**  
Topeka, KS

**Sharyl Kennedy, Ph.D.** . . . . . **Horizon Academy**  
Roeland Park, KS

# PROPOSED SLATE OF OFFICERS

Proposed slate of officers for Learning Disabilities Association of Kansas:

President . . . . .Cindy Swarner  
1st Vice President . . . . .Andrew Shoemaker  
2nd Vice President . . . . .Holly Dressler  
Secretary . . . . .Andrea Blair  
Treasurer . . . . .Kent Williams  
Newsletter . . . . .Holly Dressler

Further written nominations will be accepted at:

**LDAK**  
**P.O. Box 4424**  
**Topeka, KS 66604**

Or you may e-mail Marcia Williams, Executive Secretary, at [marciasu@aol.com](mailto:marciasu@aol.com).

The Executive Secretary is a paid position and needs to be filled. If interested, see information below or contact Marcia.

# SEEKING EXECUTIVE SECRETARY

**LDAK is seeking someone to fill the position of Executive Secretary. If you are interested, please e-mail your resume to [marciasu@aol.com](mailto:marciasu@aol.com) or mail to:**

**LDAK**  
**PO Box 4424**  
**Topeka, KS 66604**

Major position responsibilities include:

- ❖ General contact for the organization
- ❖ Organization and upkeep of membership records
- ❖ Make bank deposits for the organization
- ❖ Organize mailings
- ❖ Coordinate and mail conference registrations and invoices
- ❖ Good organizational skills required
- ❖ Other tasks as needed by the organization

---

# DEAUN JETER MEMORIAL SCHOLARSHIP

## I. Purpose:

- ◆ To aid Kansas LD students in their endeavors to pursue higher education.
- ◆ To stimulate their motivation toward academic achievements.
- ◆ To open up the possibilities of continued educational achievements. To illustrate that there are no limits to what they can work for.

## II. Eligibility:

- ◆ Any Kansas graduating LD student who can meet college or vocational/technical admissions requirements.

## III. Application Procedures:

- ◆ Applications are due May 1 of student's senior year.
- ◆ You may obtain application forms at the following website: [www.ldakansas.org/LDAKScholarship.htm](http://www.ldakansas.org/LDAKScholarship.htm); or from LDA of Kansas, Box 4424, Topeka, KS 66604.
- ◆ Responses to the questions on the application form may be submitted in any manner: typed, handwritten, taped, etc.
- ◆ Applications must be accompanied by the following:
  1. A copy of the front page of the applicant's current or most recent IEP.
  2. A one-page cover letter from a teacher, counselor or administrator answering the question, "Why do you think this student should be awarded the scholarship?"

## IV. Criteria for Selection:

- ◆ Student's strengths.
- ◆ Nature of the student's learning disability.
- ◆ Student's non-academic activities and interests.
- ◆ Measure of the student's motivation.
- ◆ Student's rank, cumulative grade point average, and SAT or ACT scores (these will be considered as only one of many indicators of the applicant's potential for success in post-secondary education).
- ◆ LDAK members' families will be given preference in case of a tie.
- ◆ Financial need will be considered in case of a tie.
- ◆ Three letters of recommendation from counselors, LD teachers, classroom teachers, employers, pastors or friends (finalists only).
- ◆ Personal interview (finalists only).

## V. Amount of Scholarship: \$500

# Recognize Success

## LDAK Awards Nomination Form

Please complete  
and mail to:

Sharyl Kennedy, Ph.D.  
Horizon Academy  
4901 Reinhardt Rd.  
Roeland Park, KS 66025  
hakennedy@yahoo.com

### I. Nominee:

Name \_\_\_\_\_ Phone \_\_\_\_\_ / \_\_\_\_\_  
*Day Evening*

Address \_\_\_\_\_ City \_\_\_\_\_ ZIP \_\_\_\_\_

Current Position \_\_\_\_\_ Location \_\_\_\_\_

### II. Award:

\_\_\_\_\_ Special Education Teacher of the Year      \_\_\_\_\_ Professional of the Year

\_\_\_\_\_ Swalwell Award for Parent/s of the Year      \_\_\_\_\_ Student of the Year

### III. Qualifications: (Please attach additional documentation as needed.)

Please describe the nominee's service in the area of Learning Disabilities.

---

---

---

---

---

Please describe how this individual's efforts and performance support consideration for the award.

---

---

---

---

---

### IV. Nominator:

Name \_\_\_\_\_ Phone \_\_\_\_\_ / \_\_\_\_\_  
*Day Evening*

Address \_\_\_\_\_ City \_\_\_\_\_ ZIP \_\_\_\_\_

Position \_\_\_\_\_

# Learning Disabilities Association of Kansas 38<sup>th</sup> Annual Conference

**SAVE THE DATES!**

**November 6<sup>th</sup>, 7-8:30pm**

Free and Open to the Public!  
Parents are encouraged to attend.

**November 7<sup>th</sup>, 8am-4pm**

Keynote Speaker & Breakout Sessions

Johnson County Community College  
12345 College Blvd.,  
Overland Park, Kansas

Complete conference program &  
registration materials to follow.



## Dr. Samuel O. Ortiz, Keynote Speaker

Dr. Ortiz is Associate Professor of Psychology at St. John's University, New York. He holds a Ph.D. in clinical psychology from the University of Southern California and a credential in school psychology with postdoctoral training in bilingual school psychology from San Diego State University. He has served previously as Visiting Professor and Research Fellow at Nagoya University, Japan, and as Vice President for Professional Affairs of APA Division 16 (School Psychology). He currently serves on APA's Committee on Psychological Tests and Assessment and their Coalition for Psychology in Schools and Education. Dr. Ortiz conducts research and publishes in a variety of areas including nondiscriminatory assessment of diverse individuals, cross-battery assessment, and learning disabilities. His recent books include "Assessment of Culturally and Linguistically Diverse Students: A practical guide," "Essentials of Cross-Battery Assessment, 2<sup>nd</sup> Edition," and "The Achievement Test Desk Reference, 2<sup>nd</sup> Edition: A guide to learning disability identification." and Dr. Ortiz is bilingual (Spanish) and bicultural (Puerto Rican).



For more information, see the LDA Kansas web site at [www.ldakansas.org](http://www.ldakansas.org)

---

# RESOURCES FOR SUMMER CAMPS

**21st Century Therapy, P.C**  
[www.21stcenturytherapypc.com](http://www.21stcenturytherapypc.com)

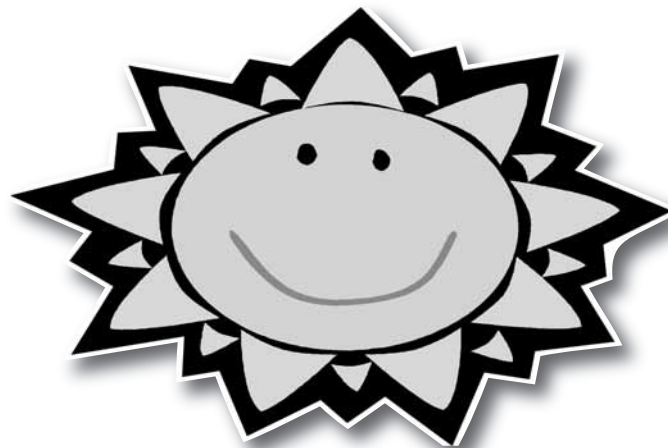
**Accessible Arts Inc.**  
[www.accessiblearts.org](http://www.accessiblearts.org)

**Camp Encourage**  
[www.campencourage.com](http://www.campencourage.com)

**H.O.R.S.E. Helping Others Reach Success and Excellence**  
[www.horsehelpspeople.org](http://www.horsehelpspeople.org)

**Horizon Academy**  
[www.horizon-academy.com](http://www.horizon-academy.com)

**Johnson County Park and Recreation District - New Horizons**  
[jcprd.com](http://jcprd.com)



**Spofford SCAMPS Day Camp**  
[spoffordhome.org](http://spoffordhome.org)

**UMKC-Institute for Human Development and MCC-Longview** offer ACED classes for students 16 and older with developmental disabilities  
[www.ihd.umkc.edu/ACED](http://www.ihd.umkc.edu/ACED)

---

Learning Disabilities Association of Kansas  
P.O. Box 4424  
Topeka, KS 66604



**PRSRT STD**  
U.S. POSTAGE PAID  
Johnson County  
Community College

*Not all great minds think alike!*

---